



APPROVED FOR OPERATION IN:

- Class 1, Division 1 & 2, Group D
- Class 2, Division 1 & 2, Group G
- Hazardous Environment

Flexible Conduit (FC) Cables

RICO Model # HSD-EX-AC-60

EX-60

Sit-Down, Counterbalanced Explosion Proof Forklift



For more information, or to find
your nearest Hyster® dealer, go to:
www.Hyster.com

RICO

Since 1984 RICO Manufacturing has been designing and manufacturing specialized lift trucks for the most rigorous and demanding industries around the globe.



RICO's hazardous products division continues to be the leading manufacturer of Explosion Proof equipment and forklifts in the United States.

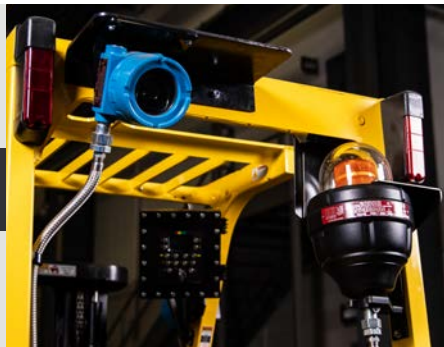
RICO's standard for excellence in design, manufacturing and installation results in the best EX-rated lift trucks on the market today. All of our explosion-proof lift trucks are designed around operator visibility, friendly maintenance and outstanding parts/service support.



98%
WORK PERFORMED
IN-HOUSE

\$
FINANCIALLY
INDEPENDENT

SAFETY FEATURES



Safety is a critical focus for every successful organization –
forklift safety starts with RICO.



STATIC CONDUCTIVE STEER TIRES

Prevent sparks, helping to provide a working environment with reduced peril and hazardous conditions.



PROTECTED SURFACES

Exposed components on the perimeter of the truck, including forks, are protected with brass and aluminum alloys eliminating the possibility of mechanical sparking.



RIGOROUS TESTING

Built to UL583 specifications, and approved by FM Global, a Nationally Recognized Testing Laboratory.



OUTSTANDING VISIBILITY

Excellent visibility helps increase operator awareness.



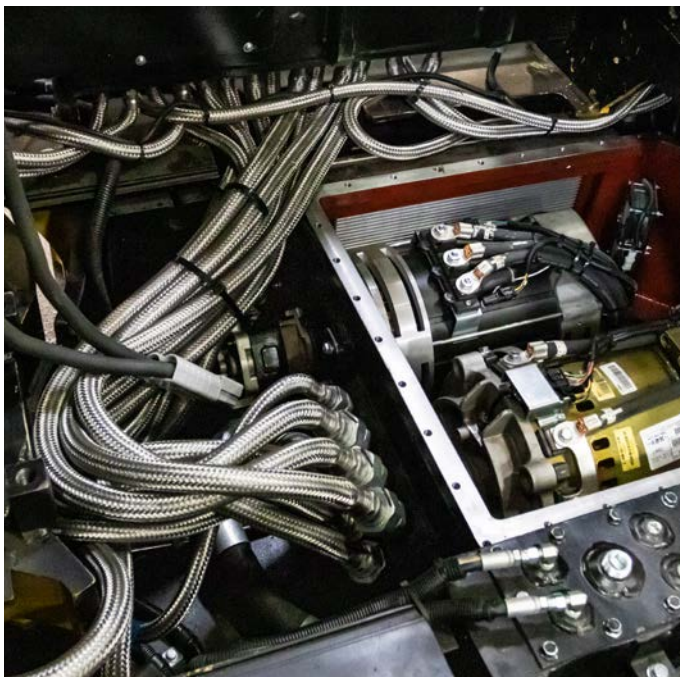
LIGHTING

Additional packages for LED work lights, blue pedestrian light and LED strobe light are available.



Choose RICO for exceptional performance and explosion proof features.

DRIVE, PUMP AND ELECTRICAL ENCLOSURES
House only electrical components and are approved to be included on EX-rated lift trucks. All RICO enclosures have been tested for approval in an EX-rated environment by FM Global.



FLEXIBLE CONDUIT (FC) CABLES house regular cabling, which is sealed to ensure safe use in an EX-rated environment. The FC Cable provides flexibility and space saving.

FEATURES & BENEFITS

EX-60 |||||

RICO Model # HSD-EX-AC-60



EASE OF MAINTENANCE
Easy access enclosure design.



REDUCED COSTS
Battery box eliminates the need for an EX battery.



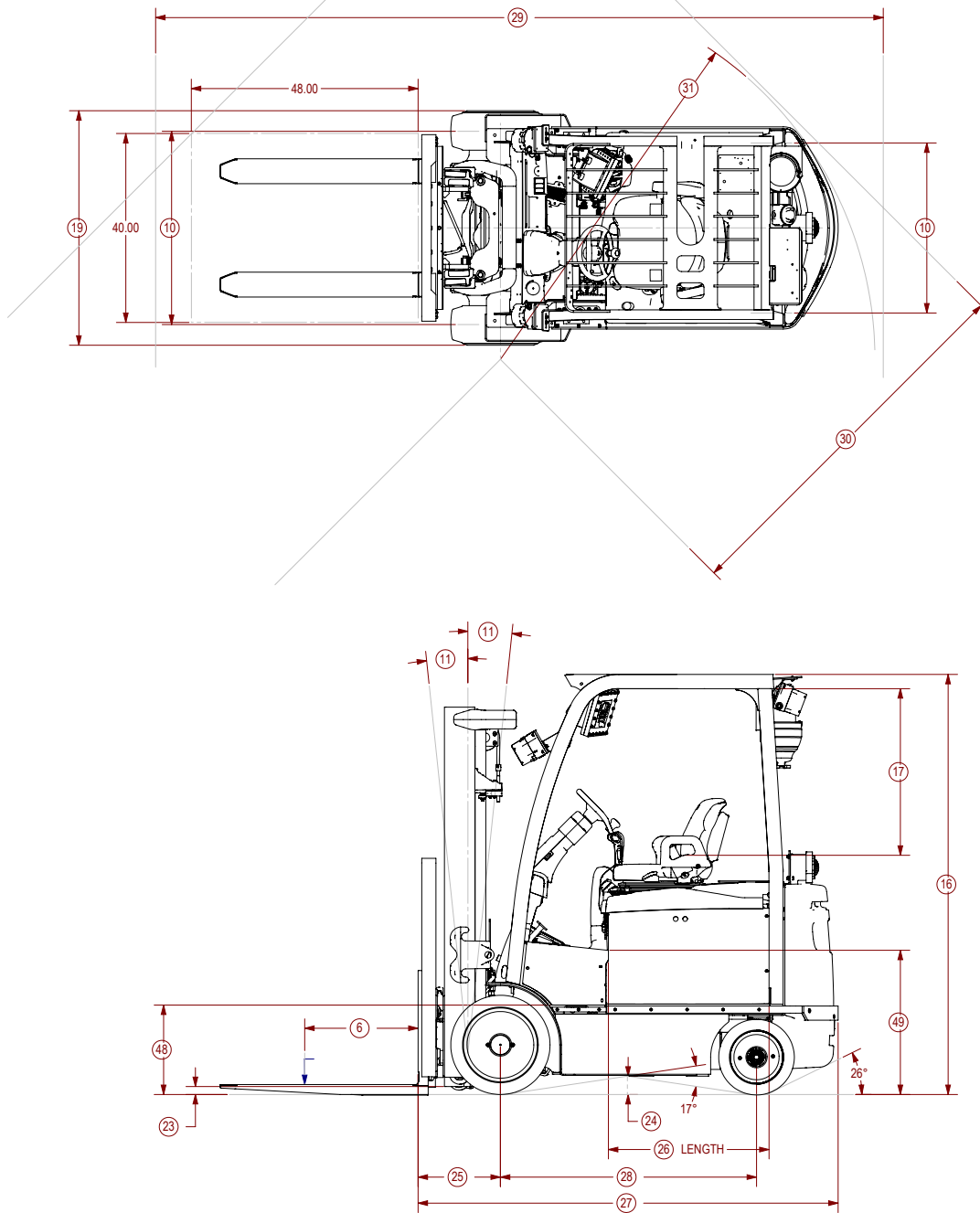
INVENTORY CONTROL
Industry standard components for local servicing dealer sourcing.



APPROVED FOR OPERATION IN:

- Class 1, Division 1 & 2, Group D
- Class 2, Division 1 & 2, Group G
- Hazardous Environment

SPECIFICATIONS



GENERAL

| | | | | | |
|---|----------------|--|--|---------|---------------|
| 1 | Manufacturer | | | | RICO |
| 2 | Model Design | | | | HSD-EX-AC-60 |
| 3 | Power | | | | Electric |
| 4 | Operation | | | | Sit |
| 5 | Rated Capacity | | | lb (kg) | 6,000 (2,722) |
| 6 | Load Center | | | in (mm) | 24 (610) |

TIRES

| | | | | | |
|----|---|----------|--------------------------|---------|---|
| 7 | Tire Type – Cushion, Solid, Pneumatic, etc. | | Drive/Steer | | Cushion / Cushion |
| 8 | Tire Size | | Drive/Steer | In | 21 x 8 x 15 / 16 x 6 x 10.5 |
| 9 | Wheels – Number | X-Driven | Drive/Steer | | 2X / 2 |
| 10 | Tread | ☿ Tires | Std Dr / Wide Dr / Steer | in (mm) | 35.6 / 40.9 / 36 (905 / 1,039 / 915) |



DIMENSIONS

| | | | | | |
|----|--|--|-------------|---------|---|
| 11 | Mast Tilt | | Std Opt Opt | degrees | 5F/5B 10F / 5B (5F / 4B) |
| 12 | Mast-Lowered Height | | Std Mast | in (mm) | 83 (2,085) |
| 13 | Free Lift – Top of Fork | Std 2 Stg Limited Free Lift Mast | in (mm) | 5 (140) | |
| 14 | Opt 2 Stg Full Free Lift Mast with/without LBR | | | in (mm) | 33/56 (855 / 1,440) |
| 15 | Lift Height-Top of Fork | Std 2 Stg Limited Free Lift Mast | | in (mm) | 118 (3,009) |
| 16 | Mast – Extended Height | Std Mast with / without LBR | | in (mm) | 167/144 (4,235 / 3,655) |
| 17 | Overhead Guard Height | Std/Drive in Rack / Opt / Opt Flat Plate | | in (mm) | 88.5 / 88.5 / 86.5 / 84.1 (2,248 / 2,248 / 2,197 / 2,137) |
| 18 | SIP to Bottom Std OHG | Susp at Mid-Point Std / Susp / Swivel | | in (mm) | 38.3 / 37.4 / 37.3 (975 / 950 / 948) |
| 19 | Overall width | Standard Tread / Wide Tread | | in (mm) | 43.6/48.9 (1,108 / 1,242) |
| 20 | Forks | Thickness x Width x Length | | in (mm) | 2 x 4.9 x 42 (50 x 125 x 1,067) |
| 21 | Standard Carriage Width | | Class II | in (mm) | 38.5 (977) |
| 22 | Floor to Battery Compartment | | | in (mm) | 17.2 (436) |
| 23 | Ground Clearance | Lowest Point | | in (mm) | 3.6/3.3 (91 / 85) |
| 24 | Ground Clearance | Center of Truck | | in (mm) | 3.7/3.6 (94 / 92) |
| 25 | Load Distance | Center of Wheel to Face of Forks | | in (mm) | 15.8 (402) |
| 26 | Battery Compartment | Height | | in (mm) | 20.75 (527.05) |
| | | Width | | in (mm) | 29.19 (741.43) |
| | | | Nominal | SIZE | 33* |
| | | Length | Actual | in (mm) | 32.52 (826) |
| 27 | Length to Face of Forks | Chassis Length | | in (mm) | 87.3 (2,218) |
| 28 | Wheelbase | | | in (mm) | 54.2 (1,377) |
| 29 | Right Angle Stack | | | in (mm) | 140.0 (3,555) |
| 30 | Equal Aisle | 90° Intersecting Angle | | in (mm) | 75.0 (1,904) |
| 31 | Outside Turning Radius | | | in (mm) | 76.1 (1,934) |

WEIGHT

| | | | | | |
|----|----------------------|-----------------------------|---------|---------|--------------------------------|
| 32 | Truck Weight | Without Battery | NL | lb (kg) | 945 (4,289) |
| 33 | Axle Loading – Drive | Static w / Max. Wt. Battery | NL / RL | lb (kg) | 4,700 / 15,093 (2,132 / 6,846) |
| 34 | Axle Loading – Steer | Static w / Max. Wt. Battery | NL / RL | lb (kg) | 6570 / 2,177 (2,980 / 987) |

PERFORMANCE

| | | | | | |
|----|--------------|---------------------|-------------------|------------------|--------------------------|
| 35 | Travel Speed | | NL/RL | mph (km / h) | 7.02 / 7.02(11.3 / 11.3) |
| 36 | Lift Speed | 3 Stg FFL Mast | NL/RL | ft/min (m / sec) | 36 / 36 (.18 / .18) |
| 37 | Lower Speed | 3 Stg FFL Mast | NL/RL | ft/min (m / sec) | 79 / 104 (0.4 / .53) |
| 38 | Gradeability | 5 Minute Rating | Max Grade | % | 19 |
| | | 60 Minute Rating | Max Grade | % | 6 |
| 39 | Brake | Method of Control | Service / Parking | | Hydraulic / Mechanical |
| | | Method of Operation | Service / Parking | | Foot / Foot |

ELECTRIC

| | | | | | |
|----|------------------|-----------------------|--|---------|---|
| 40 | Battery | | | Type | Lead Acid |
| | | | | VOLTS | 36 |
| 41 | Traction Motor | 60 Minute Rating | | hp (kW) | 24.7 (18.4) |
| 42 | Pump Motor | 15% Rating | | hp (kW) | 16.6 (12.4) |
| 43 | Traction Motor | Type / Control Method | | | AC / Transistor |
| 44 | Pump Motor | Type / Control Method | | | AC / Transistor |
| 45 | Number of Speeds | Traction/Pump | | | Infinitely Variable / Infinitely Variable |

OTHER

| | | | | | |
|----|----------------------------|----------------------------|--------|-------------------|------------|
| 46 | Step Height | | | in (mm) | 18.7 (475) |
| 47 | Floor Height | Lowest Point | | in (mm) | 30.4 (772) |
| 48 | Attachment Relief Pressure | | | psi (bar) | 2250 (155) |
| 49 | Auxiliary Oil Flow | 3rd and 4th Function | | gal/min (l / min) | 11 (40) |
| 50 | Sound Level | Measured per ANSI B56.11.5 | dB (A) | 60 | |

BATTERY AND COMPARTMENT SPECIFICATIONS.

| Battery Compartment Dimensions | | | | Battery Dimensions and Specifications | | | | | | | | | |
|------------------------------------|-------------------|----------------|-------------------|---------------------------------------|---------------|------------------|-------------------|-------------|-------|--------------|--------------------------|----------------|----------------|
| Compartment Type | Width | Length | Height | "X" | | "Y" | | "Z" | Volts | No. of Cells | Max Capacity 6 Hour Rate | Weight | |
| | | | | Min | Max | Min | Max | Max | | | | Min | Max |
| | in (mm) | | | in (mm) | | | | | | | amp hr (kwh) | lb (kg) | |
| Vertical Removal (Battery Rollers) | 29.19 (741.43) | 32.52 (826) | 20.75 (527.05) | 28.75 (703.25) | 29 (736.6) | 32.13 (816.1) | 32.38 (822.45) | 20 (508) | 36 | 18 | 675 (23.6) | 1,710 (776) | 1,890 (857) |

Note: Specifications included in the tables above are subject to change.

SERVICES & SUPPORT

At RICO, we know that once a lift truck ships, the real work is just beginning!



RICO products are fully supported throughout their service life by a team of dedicated experts who are true business partners.



RICO offers EX compliance evaluations and services on all RICO manufactured trucks.

On-site evaluations can be performed by RICO or one of our factory-trained authorized servicing dealers.



RICO provides our customers with the education and tools to evaluate and assess EX trucks in the field to determine whether they are still within compliance.

ROI

Extend the return on investment of your vehicle and ensure the safety of your team and your facility — schedule an EX compliance evaluation or EX training today.



Join the Conversation



RICO is American
Owned & Operated

RICO Manufacturing, Inc.

691 West Liberty Street
Medina, OH 44256

330.723.4050

www.RICOequipment.com

For more information, or to find
your nearest Hyster® dealer, go to:

www.Hyster.com



(844) 432-4724

fairchildequipment.com

RICO