

# X770AJ

## COMPACT CRAWLER

BOOM LIFT



### KEY SPECS

**Platform Height**  
77-ft 5-in / 23.60-m

**Platform Capacity**  
500-lb / 227-kg

**Horizontal Outreach**  
43-ft / 13.1-m

**Overall Width**  
39-in / 0.99-m

### KEY FEATURES

- Best-in-class 500-lb unrestricted platform capacity.
- Environmentally friendly with standard AC powered boom functions and diesel, lithium-ion or bi-energy power options.
- Access tight spaces and climb slopes with ease thanks to a narrow chassis and tracked wheel carriage.
- Transport with ease by a forklift or crane with forklift pockets and lifting eyes, and fits through double doorway.

### ACCESSORIES & OPTIONS

- Bi-Energy Power Option - Includes Diesel Engine and Lithium-Ion Battery
- Black Deep-Tread Tracks
- Platform, Single-Person 31 x 24-in

### STANDARD SPECIFICATIONS

#### Performance

Platform Height	77-ft 5-in / 23.60-m
Horizontal Outreach	43-ft / 13.1-m
Platform Capacity	500-lb / 227-kg
Swing	360 Degrees Non-continuous
Platform Rotation	124 Degrees (+62, -62 Degrees)
Jib (Range of Articulation)	89 Degrees (+0, -89 Degrees)
Ground Bearing Pressure (Tracks)	7.7 psi / .54 kg/cm <sup>2</sup>
Ground Bearing Pressure (Outriggers)	64.1 psi / 4.50 kg/cm <sup>2</sup>
Drive Speed	
Diesel	0.7 mph / 1.2 km/h
Optional Lithium-Ion	0.75 mph / 1.2 km/h
Max Approach / Depart Angles	
Diesel and Lithium-Ion	20° / 22°
Bi-Energy	17° / 22°
Gradeability	28%
Weight* (Diesel)	9,665-lb / 4,385-kg

\*Certain options or country standards increase weight

#### Power

Diesel Engine: Kubota D902	21.6 hp / 16.1 kW
Fuel Tank Capacity	5 gal / 19 L
AC Motor	120V AC / 60 HZ
Optional: Lithium Ion Battery	76V / 100Ah

#### Tracks

Standard	Non-marking Tracks
----------	--------------------

#### Hydraulic System

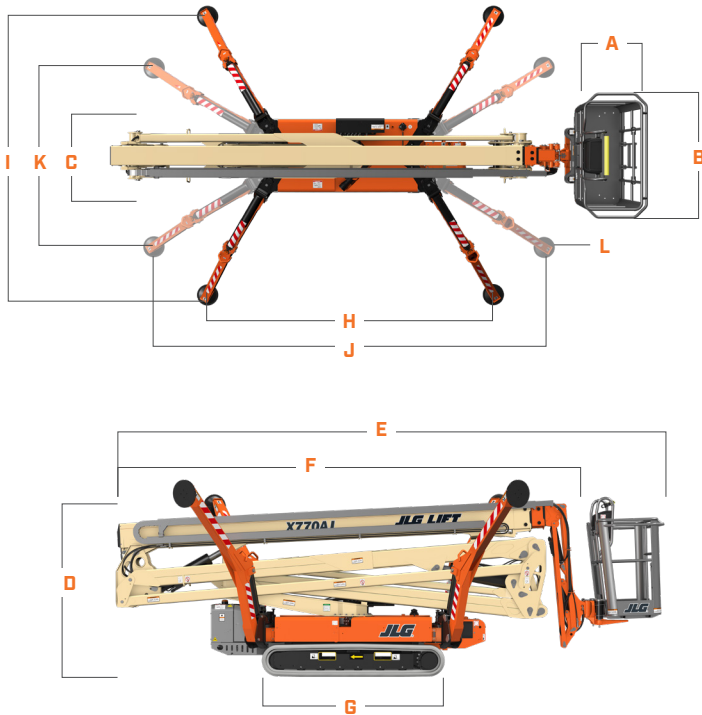
Capacity	15.85 gal / 60 L
----------	------------------

### STANDARD FEATURES

- 110V AC Receptacle in Platform
- 360 Degree Non-Continuous Swing
- 58 x 30-in Removable Aluminum Platform, Dual Side Entry
- 5-ft Articulating Jib
- AC Motor for Indoor Operation
- Air/Water Line to Platform
- Electronic Controls with One-Touch Outrigger Deployment
- Emergency Lowering Pump
- Flashing Amber Beacon
- Fork Lift Pockets
- Lifting Eyes
- Load Sensing System
- Non-Marking Tracks
- Powered Track Widening
- Proportional Controls
- Removable Controller
- SkyGuard SkyLine™
- Synthetic Biodegradable Hydraulic Oil
- Telematics-Ready Harness
- Tie Down Lugs

## DIMENSIONS

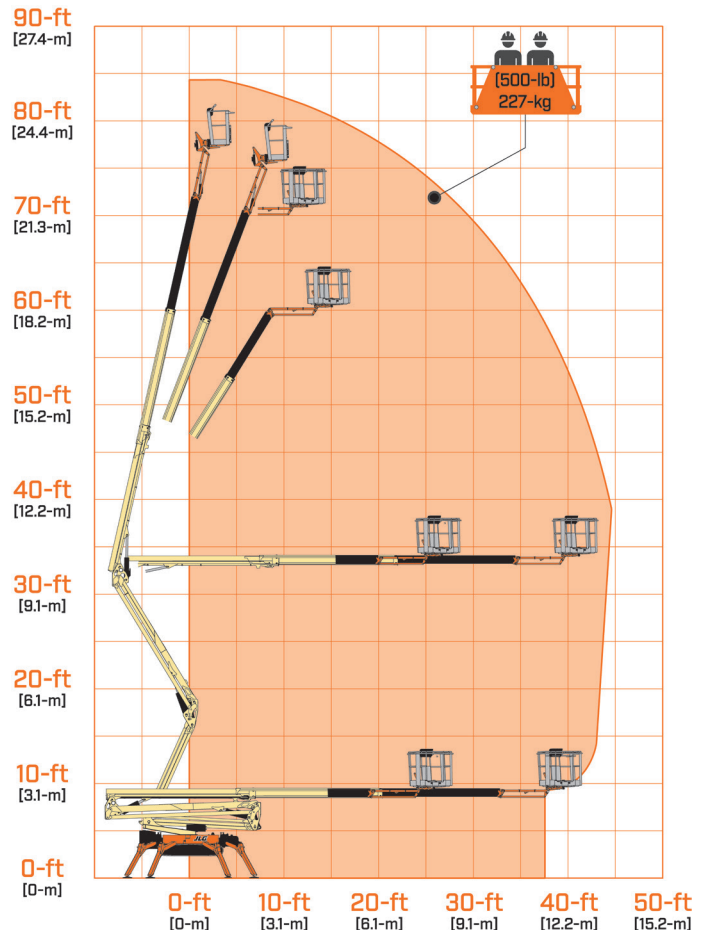
All dimensions are approximate



<b>A.</b> Platform Width	30-in / 76-cm
<b>B.</b> Platform Length	58-in / 1.47-m
<b>C.</b> Machine Width*	39-in / 99-cm
<b>D.</b> Machine Height	6-ft 6-in / 1.98-m
<b>E.</b> Machine Length	20-ft 9-in / 6.34-m
<b>F.</b> Machine Length Without Platform	18-ft 9-in / 5.72-m
<b>G.</b> Track length	6-ft 11-in / 2.10-m
<b>H.</b> Outrigger Footprint - Length	13-ft 4-in / 4.08-m
<b>I.</b> Outrigger Footprint - Width	13-ft 1-in / 3.98-m
<b>J.</b> Outrigger Footprint - Narrow Length	17-ft 11-in / 5.45-m
<b>K.</b> Outrigger Footprint - Narrow Width	8-ft 2-in / 2.50-m
<b>L.</b> Outrigger Pad Diameter	11.8-in / 30-cm

\*Overall Width (with platform removed - tracks retracted)

## REACH DIAGRAM



(844) 432-4724

[fairchildequipment.com](http://fairchildequipment.com)



We provide coverage for one (1) full year, and cover all specified major structural components for five (5) years. Due to continuous product improvements, we reserve the right to make specification and/or equipment changes without prior notification. This machine meets or exceeds applicable ANSI and CSA requirements based on machine configuration as originally manufactured for intended applications. Please reference the serial number plate on the machine for additional information.



JLG INDUSTRIES, INC.  
Toll-free US 877-JLG-LIFT  
JLG.com

An Oshkosh Corporation Company