

# X600AJ

COMPACT CRAWLER

BOOM LIFT



## STANDARD SPECIFICATIONS

### Performance

|                                      |                                     |
|--------------------------------------|-------------------------------------|
| Platform Height                      | 59-ft 3-in / 18.05-m                |
| Horizontal Outreach                  | 30-ft / 9.1-m                       |
| Platform Capacity                    | 500-lb / 227-kg                     |
| Swing                                | 360 Degrees Non-continuous          |
| Platform Rotation                    | 124 Degrees (+62, -62 Degrees)      |
| Jib (Range of Articulation)          | 89 Degrees (0, -89 Degrees)         |
| Ground Bearing Pressure (Tracks)     | 9.28 psi / .66 kg/cm <sup>2</sup>   |
| Ground Bearing Pressure (Outriggers) | 44.09 psi / 3.09 kg/cm <sup>2</sup> |
| Max Approach / Depart Angles         | 20° / 21°                           |
| Drive Speed                          | 0.8 mph / 1.3 km/h                  |
| Gradeability                         | 28%                                 |
| Weight* (Diesel)                     | 6,571-lb / 2,980-kg                 |

\*Certain options or country standards increase weight

### Power

|                                   |                   |
|-----------------------------------|-------------------|
| Diesel Engine: Kubota Z602        | 19.5 hp / 14.5 kW |
| Fuel Tank Capacity                | 1.5 gal / 5.9 L   |
| AC Motor                          | 120V AC / 60 HZ   |
| Optional: 72V Lithium-Ion Battery | 72V / 100Ah       |

### Tracks

|          |                    |
|----------|--------------------|
| Standard | Non-marking Tracks |
|----------|--------------------|

### Hydraulic System

|          |                  |
|----------|------------------|
| Capacity | 10.56 gal / 40 L |
|----------|------------------|

## KEY SPECS

|  |   |
|--|---|
| <b>Platform Height</b><br>59-ft 3-in / 18.05-m | <b>Platform Capacity</b><br>500-lb / 227-kg |
| <b>Horizontal Outreach</b><br>30-ft / 9.1-m    | <b>Overall Width</b><br>31-in / 0.78-m      |

## KEY FEATURES

- Best-in-class 500-lb unrestricted platform capacity.
- Environmentally friendly with standard AC powered boom functions, diesel or an optional lithium-ion electrical system for emission-free operation.
- Access tight spaces and climb slopes with ease thanks to a narrow chassis and tracked wheel carriage.
- Transport with ease by a forklift or crane with forklift pockets and lifting eyes, and fits through standard doorway.

## ACCESSORIES & OPTIONS

- Black Deep-Tread Tracks
- Platform, Single-Person 31 x 24-in

## STANDARD FEATURES

- 110V AC Receptacle in Platform
- 360 Degree Non-Continuous Swing
- 58 x 30-in Removable Aluminum Platform, Dual Side Entry
- 5-ft Articulating Jib
- AC Motor for Indoor Operation
- Air/Water Line to Platform
- Electronic Controls with One-Touch Outrigger Deployment
- Emergency Lowering Pump
- Flashing Amber Beacon
- Fork Lift Pockets
- Lifting Eyes
- Load Sensing System
- Non-Marking Tracks
- Powered Track Widening
- Proportional Controls
- Removable Controller
- SkyGuard SkyLine™
- Synthetic Biodegradable Hydraulic Oil
- Telematics-Ready Harness
- Tie Down Lugs

# X600AJ

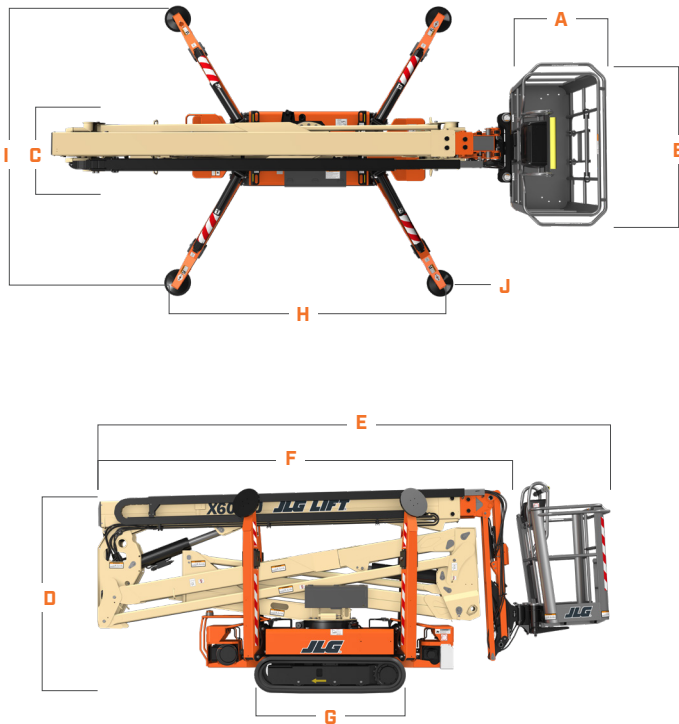
COMPACT CRAWLER

BOOM LIFT



## DIMENSIONS

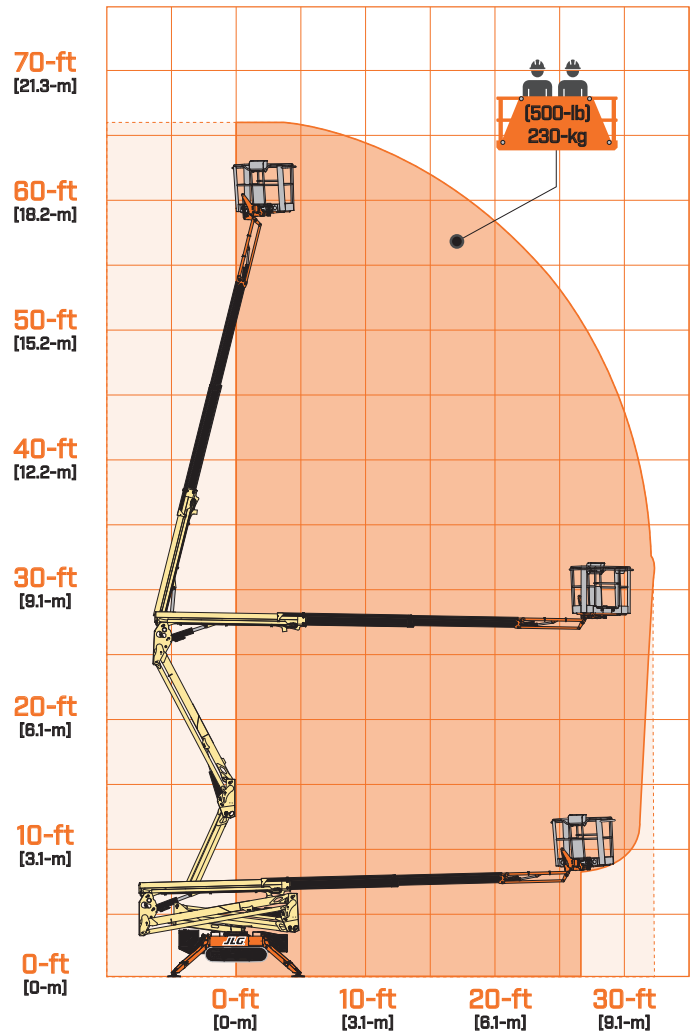
All dimensions are approximate



|   |                     |
|---|---------------------|
| <b>A.</b> Platform Width                  | 30-in / 76-cm       |
| <b>B.</b> Platform Length                 | 58-in / 1.47-m      |
| <b>C.</b> Machine Width*                  | 31-in / 78-cm       |
| <b>D.</b> Machine Height                  | 6-ft 6-in / 1.98-m  |
| <b>E.</b> Machine Length                  | 16-ft 5-in / 5.01-m |
| <b>F.</b> Machine Length Without Platform | 15-ft 3-in / 4.65-m |
| <b>G.</b> Track length                    | 4-ft 10-in / 1.47-m |
| <b>H.</b> Outrigger Footprint - Length    | 10-ft 7-in / 3.22-m |
| <b>I.</b> Outrigger Footprint - Width     | 10-ft 7-in / 3.23-m |
| <b>J.</b> Outrigger Pad Diameter          | 11.8-in / 30-cm     |

\*Overall Width (with platform removed - tracks retracted)

## REACH DIAGRAM



(844) 432-4724

[fairchildequipment.com](http://fairchildequipment.com)



We provide coverage for one (1) full year, and cover all specified major structural components for five (5) years. Due to continuous product improvements, we reserve the right to make specification and/or equipment changes without prior notification. This machine meets or exceeds applicable ANSI and CSA requirements based on machine configuration as originally manufactured for intended applications. Please reference the serial number plate on the machine for additional information.



JLG INDUSTRIES, INC.  
Toll-free US 877-JLG-LIFT  
JLG.com

An Oshkosh Corporation Company