

Specifications

| Models | S-80 XC | | S-85 XC | |
|---------------------------------------|------------|---------|------------|---------|
| Measurements | US | Metric | US | Metric |
| Working height maximum* | 86 ft | 26.27 m | 91 ft | 27.74 m |
| Platform height maximum | 80 ft | 24.38 m | 85 ft | 25.91 m |
| Horizontal reach maximum | 68 ft 6 in | 20.88 m | 74 ft 6 in | 22.71 m |
| Below ground reach | 5 ft 6 in | 1.68 m | 8 ft 8 in | 2.64 m |
| A Platform length - 8 ft model | 3 ft | 0.91 m | 3 ft | 0.91 m |
| Platform length - 6 ft model | 2 ft 6 in | 0.76 m | 2 ft 6 in | 0.76 m |
| B Platform width - 8 ft model | 8 ft | 2.44 m | 8 ft | 2.44 m |
| Platform width - 6 ft model | 6 ft | 1.83 m | 6 ft | 1.83 m |
| C Height - stowed | 9 ft 2 in | 2.80 m | 9 ft 2 in | 2.80 m |
| D Length - stowed | 37 ft 7 in | 11.23 m | 40 ft 7 in | 12.37 m |
| Length - transport (jib tucked under) | _____ | _____ | 33 ft 8 in | 10.25 m |
| E Width | 8 ft 2 in | 2.49 m | 8 ft 2 in | 2.49 m |
| F Wheelbase | 9 ft 4 in | 2.85 m | 9 ft 4 in | 2.85 m |
| G Ground clearance - center | 15.8 in | 40 cm | 15.8 in | 40 cm |

Productivity

| | | | | |
|--------------------------------------|--|----------|-----------------|----------|
| Maximum lift capacity - unrestricted | 660 lb | 300 kg | 660 lb | 300 kg |
| - restricted | 1,000 lb | 454 kg | 1,000 lb | 454 kg |
| Platform rotation | 160° | | 160° | |
| Vertical jib rotation | _____ | | 133° | |
| Turntable rotation | 360° continuous | | 360° continuous | |
| Turntable tailswing | 5 ft 3 in | 1.6 m | 5 ft 3 in | 1.6 m |
| Drive speed - stowed | 3.0 mph | 4.8 km/h | 3.0 mph | 4.8 km/h |
| - raised/extended | 0.5 mph | 0.2 m/s | 0.5 mph | 0.2 m/s |
| Gradeability - stowed** | 45% | | 45% | |
| Tilt sensor activation | front to back: 7° and side to side: 5° | | | |
| Turning radius: inside | 12 ft | 3.66 m | 12 ft | 3.66 m |
| outside | 21 ft 6 in | 6.55 m | 21 ft 6 in | 6.55 m |
| Controls | 12V DC proportional | | | |
| Tires - RT lug | Foam filled 18-625, 16 ply | | | |

Power

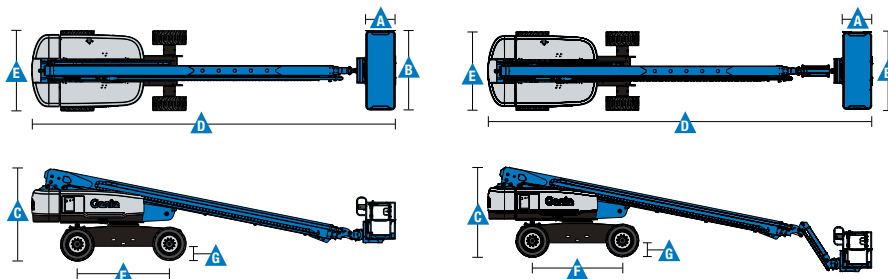
| | | | | |
|-----------------------------|--|-------|--------|-------|
| Power source | 74 hp (55 kW) Deutz turbo diesel, Tier 4f, 2.9 L 58 hp (43.25 kW) Perkins turbo diesel, Tier 4, 404D-22T 70 hp (52.2 kW) GM gas/LPG 3.0L | | | |
| Auxiliary power unit | 12V DC | | 12V DC | |
| Hydraulic tank capacity | 40 gal | 150 L | 40 gal | 150 L |
| Fuel tank capacity - diesel | 35 gal | 132 L | 35 gal | 132 L |
| - gas/LPG | 30 gal | 114 L | 30 gal | 114 L |

Weight***

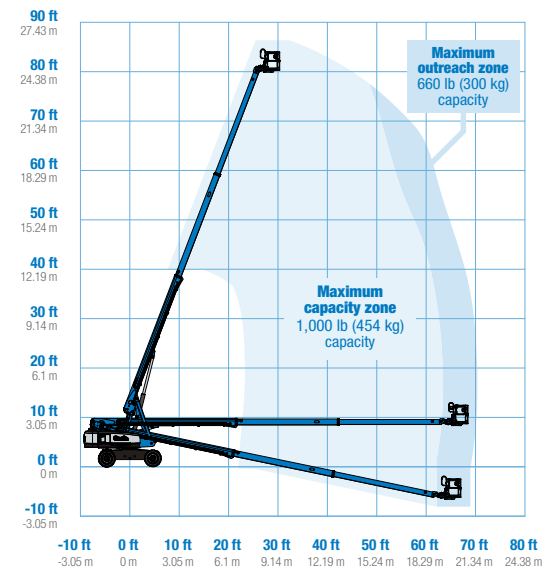
| | | | | |
|--|-----------|-----------|-----------|-----------|
| | 37,000 lb | 16,783 kg | 39,500 lb | 17,917 kg |
|--|-----------|-----------|-----------|-----------|

Standards Compliance

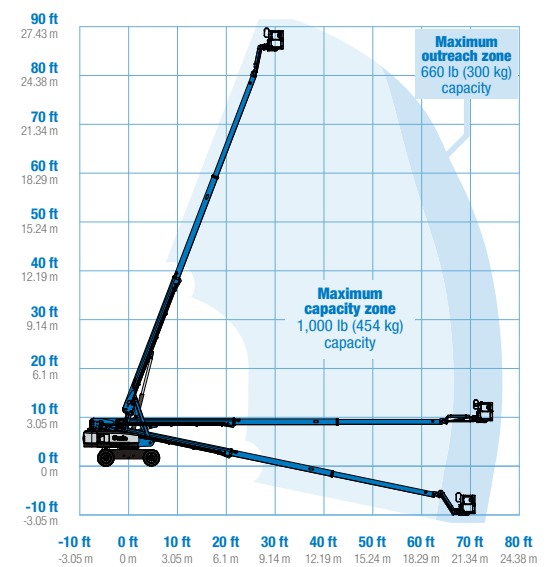
ANSI A92.20, CSA B354.6, EN 280, AS 1418.10



Range Of Motion S-80 XC



Range Of Motion S-85 XC



* The metric equivalent of working height adds 2 m to platform height. U.S. adds 6 ft to platform height.

** Gradeability applies to driving on slopes. See operator's manual for details regarding slope ratings.

*** Weight will vary depending on options and/or country standards.

Features

Standard Features

Measurements

S-80 XC

- 86 ft (26.38 m) working height
- 68 ft 6 in (20.88 m) horizontal reach
- 660 lb (300 kg) unrestricted and 1,000 lb (454 kg) restricted lift capacity

S-85 XC

- 91 ft (27.74 m) working height
- 74 ft 6 in (22.71 m) horizontal reach
- 660 lb (300 kg) unrestricted and 1,000 lb (454 kg) restricted lift capacity

Productivity

- Self-leveling platform
- 160° hydraulic platform rotation
- Proportional joystick controls
- Drive enable
- AC power cord to platform
- Horn
- Hour meter
- Tilt alarm
- Descent alarm
- 360° continuous turntable rotation
- Positive traction four wheel drive
- Two speed wheel motors
- Platform Load sense system
- Entry Toeboard
- Hydraulic oil cooler
- Alarm package
- Lift Tools[™] Work Tray
- Lift Connect[™] Telematics
- Lift Guard[™] Contact Alarm
- Active oscillation

Power

- 12V DC auxiliary power
- Anti-restart engine protection
- Auto engine fault shutdown

Easily Configured To Meet Your Needs

Platform Options

- Steel 6 ft (1.83 m) dual entry with side swing gate
- Steel 8 ft (2.44 m) tri-entry with side swing gate (standard)

Jib Options

- Non-jib (S-80 XC only)
- 5 ft (1.52 m) jib boom (S-85 XC only)

Engine Options

- 74 hp (55.18 kW) Deutz turbo diesel T4f* (standard)
- 58 hp (43.25 kW) Perkins turbo diesel T4f*
- 70 hp (52.2 kW) GM gas/LPG

Tire Options

- Rough terrain foam-filled (standard)
- Rough terrain non-marking foam-filled



Options & Accessories

Productivity Options

- Lift Guard Platform Mesh - Half
- Lift Guard Platform Mesh - Full
- Lift Guard Platform Mesh - Screen (8ft platform only)
- Platform top auxiliary rail
- Lift Power[™]
 - 3 kW AC Generator
 - 12 kW 240 V / 60 Hz Welder Ready package
 - 12 kW Welder Equipped, Select Lincoln or Miller (12 kW options include a fire extinguisher and fireproof sleeves)
- Lift Tools Access Deck*
- Lift Tools Expo Installer*
- Air line to platform
- Specialty hydraulic oil (cold weather, fire resistant, or biodegradable)
- Hostile environment kit
- Deluxe hostile environment kit
- Aircraft protection package (6 ft platform only)
- Thumb rockersteer
- Panel cradle package
- Lockable platform control box covers
- Tow package
- Work light package
- Operator Protective Structure**
- Fall Arrest Bar

Power Options

- Cold Weather Packages
- Diesel scrubber/muffler (catalytic muffler)
- LPG tank only, steel, 33.5 lb (15.19 kg) capacity
- Intake air pre-cleaner
- Positive air shutoff system (Deutz engine only)

* Also available as Tier 4i in limited regions
** Available through aftermarket parts only

Genie United States

6464 185th Ave. NE
Redmond, WA 98052
Telephone +1 (425) 881-1800
Toll Free in USA/Canada +1 (800)-536-1800
Fax +1 (425) 883-3475

Distributed By:



Effective Date: December, 2019. Product specifications and prices are subject to change without notice or obligation. The photographs and/or drawings in this document are for illustrative purposes only. Refer to the appropriate Operator's Manual for instructions on the proper use of this equipment. Failure to follow the appropriate Operator's Manual when using our equipment or to otherwise act irresponsibly may result in serious injury or death. The only warranty applicable to our equipment is the standard written warranty applicable to the particular product and sale and we make no other warranty, express or implied. Products and services listed may be trademarks, service marks or trade names of Terex Corporation and/or their subsidiaries in the USA and many other countries. Terex, Genie and AWP are registered trademarks of Terex Corporation or its subsidiaries. © 2019 Terex Corporation.