

## EPS-30

Compact design for general material handling, stacking and work positioning in tight areas.

### CAPACITY

- 3000 lb (1361 kg) @ 24" load center

### INTEGRAL BATTERY CHARGER

- 24-volt maintenance-free batteries with direct connect 110A 110VAC plug-in automatic charger
- S22-128 (2)12V 100AH

### SPEED

#### TRAVEL

- Variable from 0 mph to 3.2 mph empty
- Variable from 0 mph to 3.0 mph loaded

#### LIFT

- Up to 39.0 fpm empty
- Up to 27.5 fpm loaded

#### LOWERING

- Up to 21.5 fpm empty
- Up to 25.5 fpm loaded

### TIRES / WHEELS

**DRIVE:** 9" x 3" polyurethane

**STABILITY:** 4" x 2" polyurethane

**DUAL LOAD:** (2) 4" x 2.9" polyurethane

### HYDRAULICS

- Lift cylinder is hard chrome and provides smooth lifting and lowering
- Pump unit includes premium 3kw solenoid fired DC motor and reservoir

### DRIVE

- 24-volt 1.3kw AC drive motor delivers high torque and efficiency to extend duty cycle

### ELECTRICAL

- 24-volt ZAPI AC travel control provides high performance throughout the entire speed range
- Travel speed remains constant relative to throttle position regardless of load
- Separately fused power control circuits, quick disconnect EPD power cut off, and control head mounted hour meter / battery discharge indicator combination gauge complete the system

### BRAKES

- Electronic neutral braking assists in delivering smooth and accurate control during operation
- Electro-mechanical brake provides secure stopping power when activated



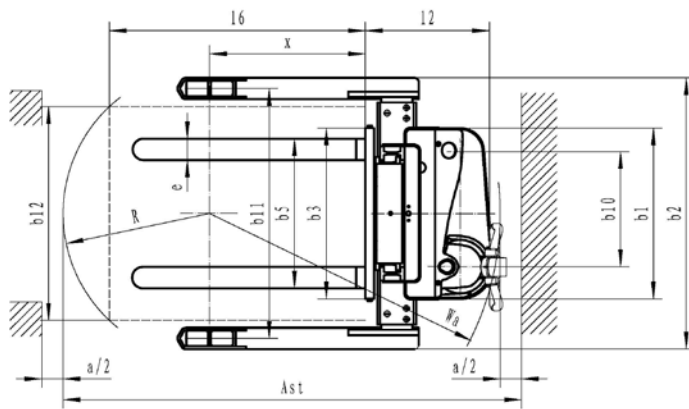
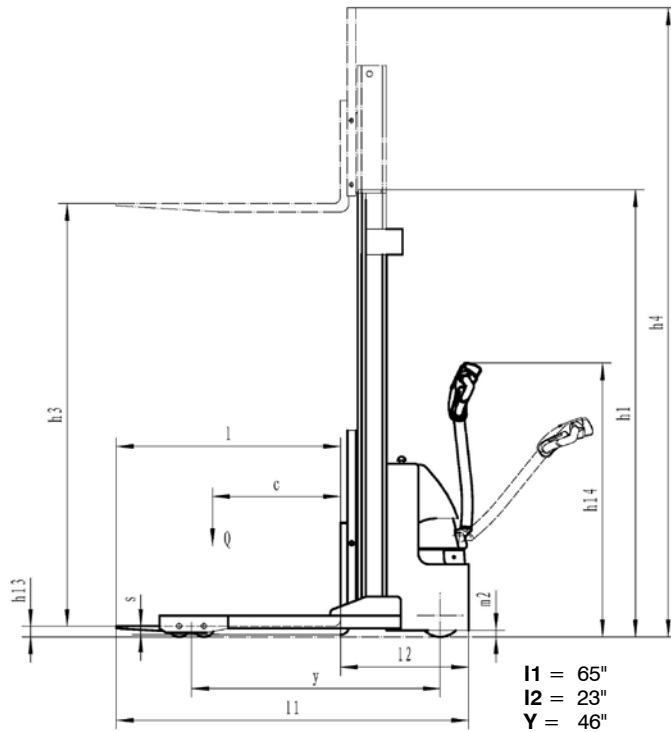
### OPERATOR CONTROLS

- Offset steer arm provides excellent line of sight for operators allowing them to walk astride the vehicle during travel
- The offset design allows the vehicle to comfortably right angle stack standard pallets in aisles under seven feet
- Travel, lift, and lower functions are located in the ergonomic operator handle. All operator controls are accessible without having to lift the hand from the handle
- Angle grips allow easy operation with either hand
- Standard wrap around guard, reversing switch, thumb control, and horn
- Low mounted steer arm offers excellent operator comfort and minimum steering effort

### CHASSIS AND MAST

- Heavy duty welded steel chassis and I-beam channel mast for added durability and service life
- Class II ITA 16.25" x 32" adjustable carriage comes standard with 42" x 4" x 1.5" forks and 36" load bask rest
- Telescoping mast includes a plexiglass mast guard and provides a 128" maximum fork elevation with a single cylinder—when collapsed the mast is a height of 83.8"
- 4" wide adjustable straddle legs allow for configurations to fit various sized pallets—straddle leg inside dimension (ID) can be set at 38" to 50" in 4" increments
- Unit features tandem load wheels with fully enclosed wheel guards and flush mounted axles prevent wheel and axle damage

Dimensions



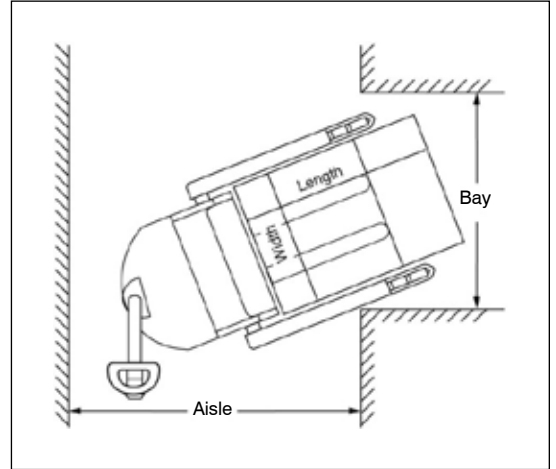
Turning radius  $W_a = 55.25"$

**SERVICEABILITY**

- Removable two piece power head cover allows for easy maintenance and access to all vehicle components

**EQUIPMENT OPTIONS**

- Hand held remote lift and lower control box with 3' coiled cord



**Aisle Guide - EPS30-128 Right Angle Stacking**

Load Width	Load Length		
	36"	40"	48"
36"	61"	61"	61"
40"	62"	63"	63"
48"	67"	67"	67"

For ease of use add 8" to aisle dimension listed.

**Note:** Aisle dimensions listed above assume the minimum bay width to be straddle OD plus 5" (2.5" on each either side of straddle leg). Straddle OD is the load width plus 10".

Truck performance may vary due to application requirements and changes in model design.

All measurements shown are in standard "inch" units

Model#	Mast	Lift Height	Collapsed Height	Free Lift	Ext Height w/LBR	Adjustable Straddle Leg 4" Increments		<sup>3</sup> Weight Complete
		h3	h1	0"	h4	ID	OD	
EPS30-128	Two Stage	128"	83.8"	0"	164"	b12	b2	2000 lbs

<sup>3</sup> Complete weight includes truck, battery and charger.



Corporate 410 Admiral Blvd  
Mississauga, ON, Canada L5T 2N6  
t 905.457.3900 f 905.457.2313

USA 6350 Burnt Poplar Road  
Greensboro, NC 27409  
[www.bluegiant.com](http://www.bluegiant.com)



Blue Giant offers a full line of dock levelers, dock safety equipment, seals and shelters, accessories, ergonomic and scissor lift equipment and industrial trucks. Concurrent with our continuing product improvement program, specifications are subject to change without notice. Please contact Blue Giant for latest information. Some features illustrated may be optional in certain market areas.