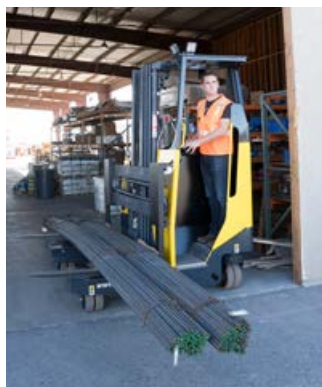


COMBi-MR

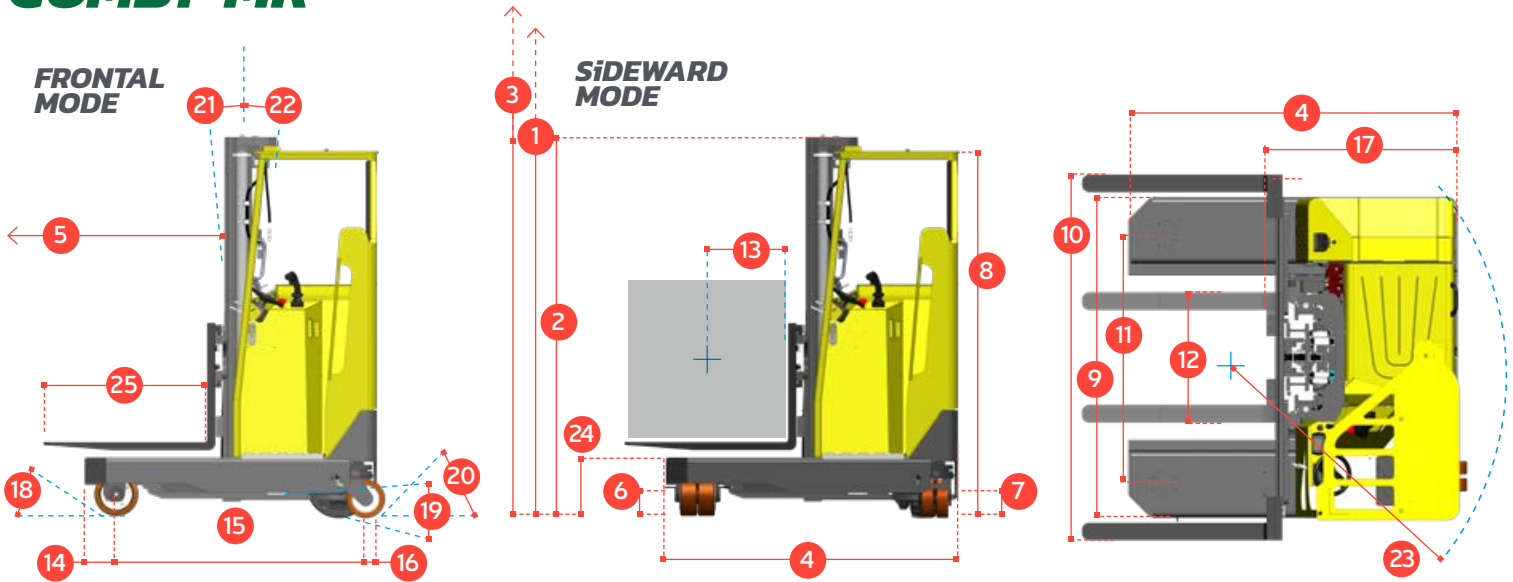
The Combi-MR is Combilift's multi-directional stand-on reach truck which offers superb manoeuvrability and safety in the tightest working conditions.

COMBiLiFT

LIFTING INNOVATION



COMBi-MR



This compact truck features one rear wheel drive with a large rubber tyre and 360° steering rotation. The multi-functional controlled joystick allows the operator to change direction and travel speed in a smooth seamless motion, in addition to full control of all the hydraulic functions. This contributes to faster procedures for manufacturing distribution and logistics operations.

REF.	DESCRIPTION	STANDARD	OPTIONAL
1a	Max. Lift Height	159"	218"
1b	Freelift Height	0"	58"
2	Height Mast Closed	105"	98"
3	Max. (Mast raised)	187"	257"
4	Overall Length		75"
5	Mast Travel		34"
6	Ground Clearance Under Mast		4"
7	Ground Clearance to Centre of Wheelbase		4"
8	Height Over Cab (Without work lights)		98"
9	Overall Width		73"
10	Width over forks		83"
11	Track Front		57"
12	Frame Opening		37"
13	Load Centre Distance		24"
14	Overhang Front		8"
15	Wheelbase		58/64"
16	Overhang Back		9"
17	Length From Face of Fork		43"
18	Approach Angle		35°
19	Ramp Angle		15°
20	Departure Angle		35°
21	Forward Tilt		2°
22	Backward Tilt		4°
23	Minimum Outside Radius		77"
24	Platform Height		15"
25	Platform Length		31"
A	Capacity		5,000 lbs
B	Unladen Weight		11,000 lbs
C	Maximum Ground Speed		7 mph
D	Gradability		7%
E	AC Rear Drive		8 HP
F	Battery		48V x 750Ah
G	Fork Section		2" x 4" x 45"
H	Vulkollan Front Tyre		OD 10" / Width 3"
I	Solid Rubber Rear Tyre		OD 16" / Width 7"
J	Standard Colour		Yellow & Gray

Multi-Directional



Features Include:

- Standing Operator Over-Head Guard
- Full Rear Protection
- Multi-Direction Operation
- AC Electric Steering
- AC Motor Technology
- Multi-Function Joystick
- Optional Integrated Hydraulic Fork Positioner

Distributed by:



International Application No. PCT/EP2012/067238 Multi Position Tiller; GB Patent No. 2531778; International Patent Application No. PCT/EP2015/074906.

COMBILIFT HAS A POLICY OF CONTINUOUS PRODUCT DEVELOPMENT AND RESERVES THE RIGHT TO ALTER SPECIFICATIONS WITHOUT PRIOR NOTICE. SPECIFICATIONS AND/OR DIMENSIONS MAY VARY FROM THOSE ILLUSTRATED IN SOME COUNTRIES.

(844) 432-4724

fairchildequipment.com